

E2704 | BOTTOM LOADING ARM



| E2704 Loading Arm in working position

FEATURES

- * Petroleum application
- * Reliable
- * Long life
- * Low maintenance
- * Easy handling
- * Environmentally friendly

This unloading arm is designed for applications of light oil product or chemicals. The loading arm is equipped with a special coupler for unloading of russian railcar from underneath. The coupler enables a safe and quick connection independent to the orientation of the adapter lid.

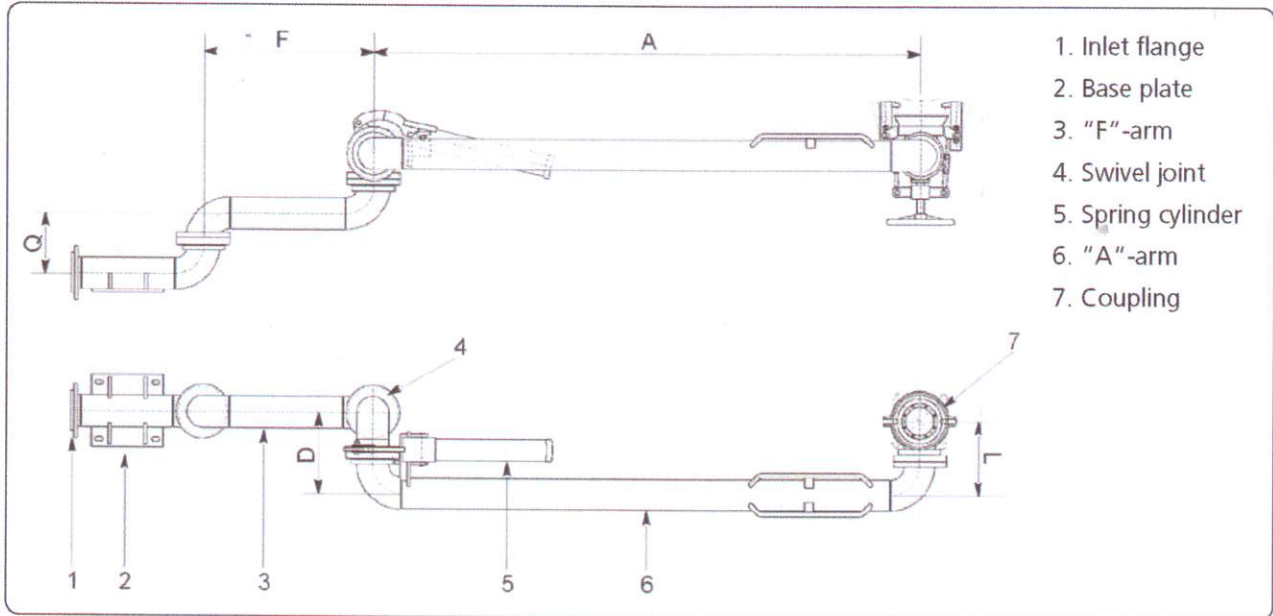
The long reach of the loading arm also enables connection to rail cars when the adapter is not positioned exactly. Due to the low offset of the swivel joints a minimum vertically height ist guaranteed.

The robust and high quality design of the swivel joints and the spring cylinder balancing gives comfortable and smooth handling of the arm.

E2704

E2704 | BOTTOM LOADING ARM

DIMENSIONS AND TECHNICAL DATA

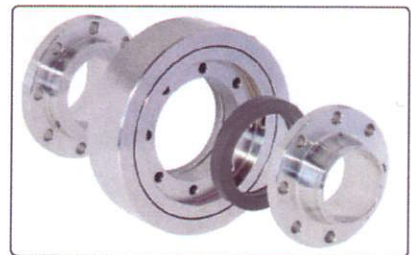
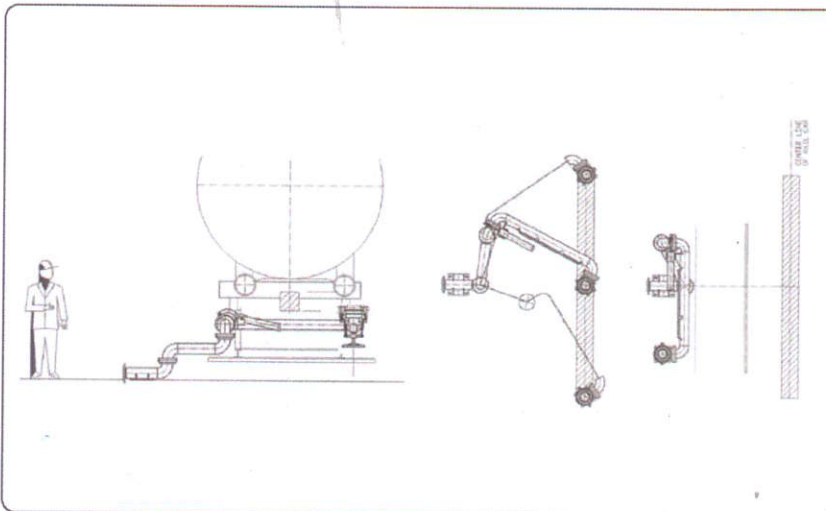


MATERIALS AND TECHNICAL DATA

Sizes	Material	Seals	Temperature range
DN 150	carbon steel/ aluminium	NBR, FPM, PTFE, special materials	-50 °C to +50 °C, higher or lower temperature on request

* Based on size of foundation

ENVELOPE DRAWING



EMCO WHEATON carbon steel swivel joint with flame hardened ball race way for a long life time!

For more details see our data sheet swivel joint **D2000**.

Whilst the content of this leaflet has been edited with the greatest care, we are not liable for any errors and/or omissions. Subject to change without notice.

E2704 EN 05/08

Better by
Design



EMCO WHEATON

A Gardner Denver Product

EMCO WHEATON GmbH
Emcostraße 2-4 · 35274 Kirchhain · Germany
Phone +49 6422 84-0 · Fax +49 6422 5100
www.emcowheaton.com · assist@emcowheaton.com